

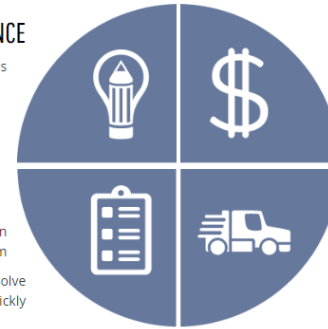
# WE MAKE IT HAPPEN.



**ACE OFFICE FURNITURE**  
HOUSTON

### DESIGN ASSISTANCE

Lighting Layouts and Lighting Controls  
Energy Code Compliant Solutions



### ESTIMATING & BUDGETING

Thorough Review of Specifications and Drawings  
Provide Accurate, Comprehensive and Timely Quotes

### PROJECT MANAGEMENT

Proactive Coordination with Vendors and Construction Team  
Identify conflicting or missing information and resolve problems quickly

### LOGISTICAL EXCELLENCE

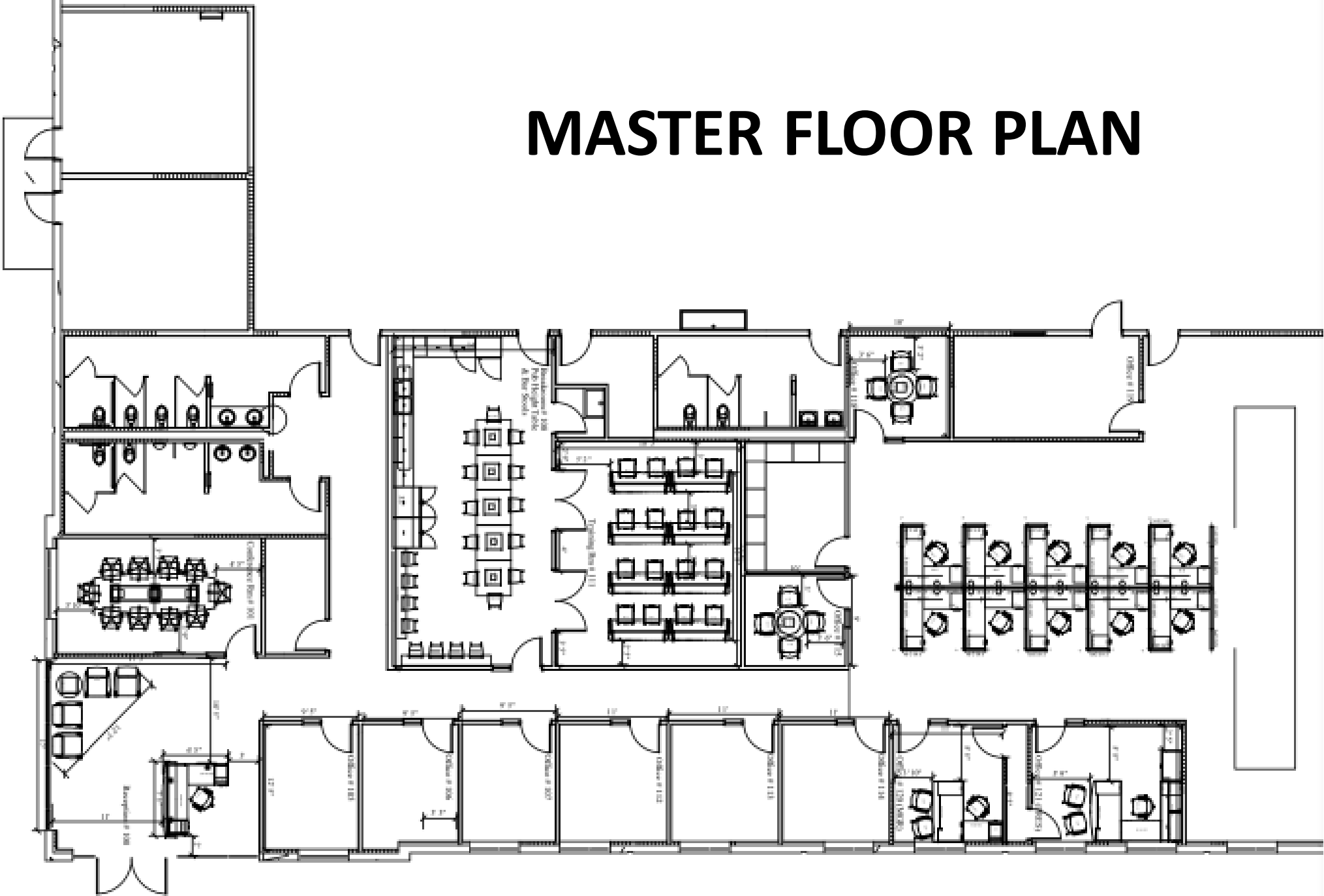
Receive, inventory, and store materials in secure warehouse locations to reduce lead times  
Custom job site delivery to meet project needs

4200  
**LONESTAR ELECTRIC**  
SUPPLY

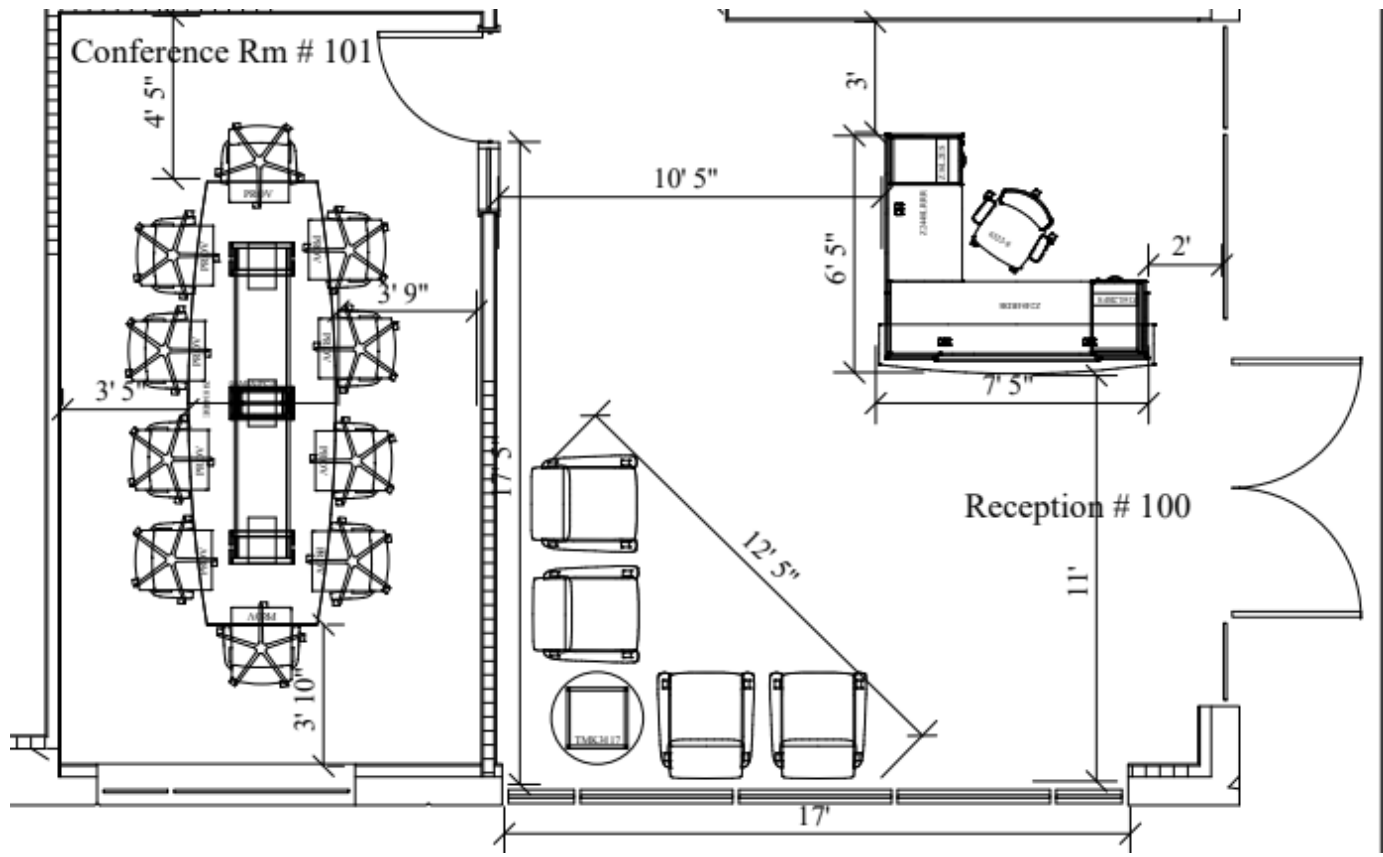
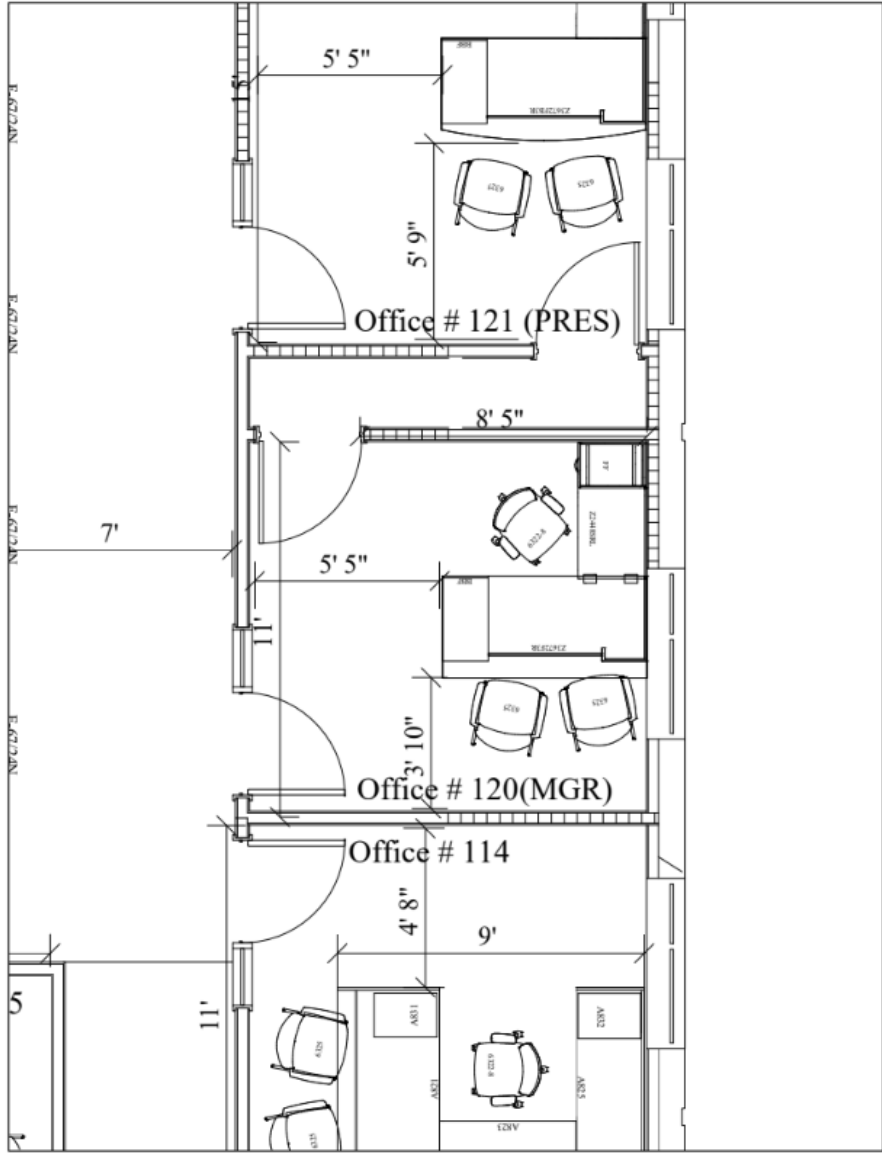
**LONESTAR ELECTRIC**  
SUPPLY

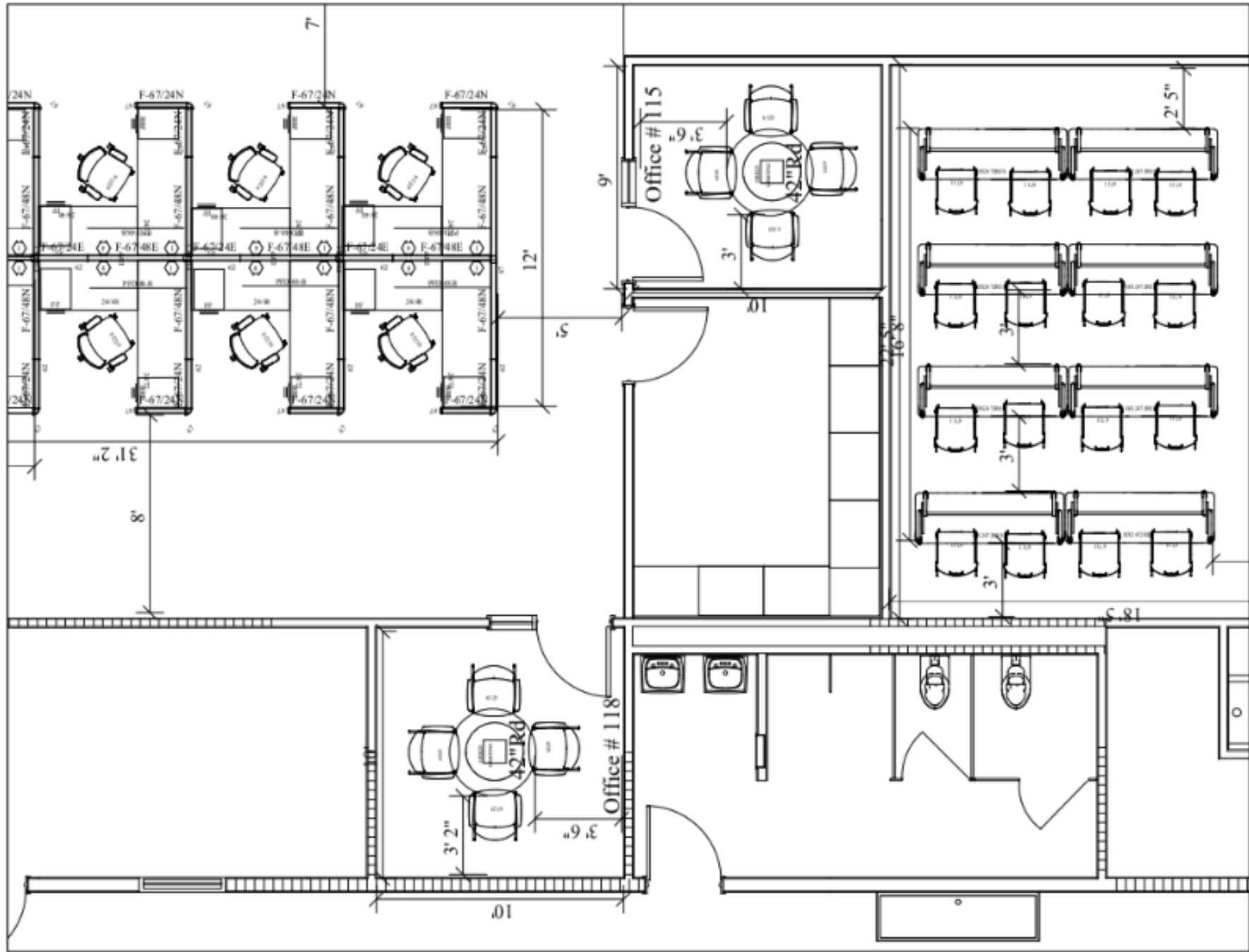


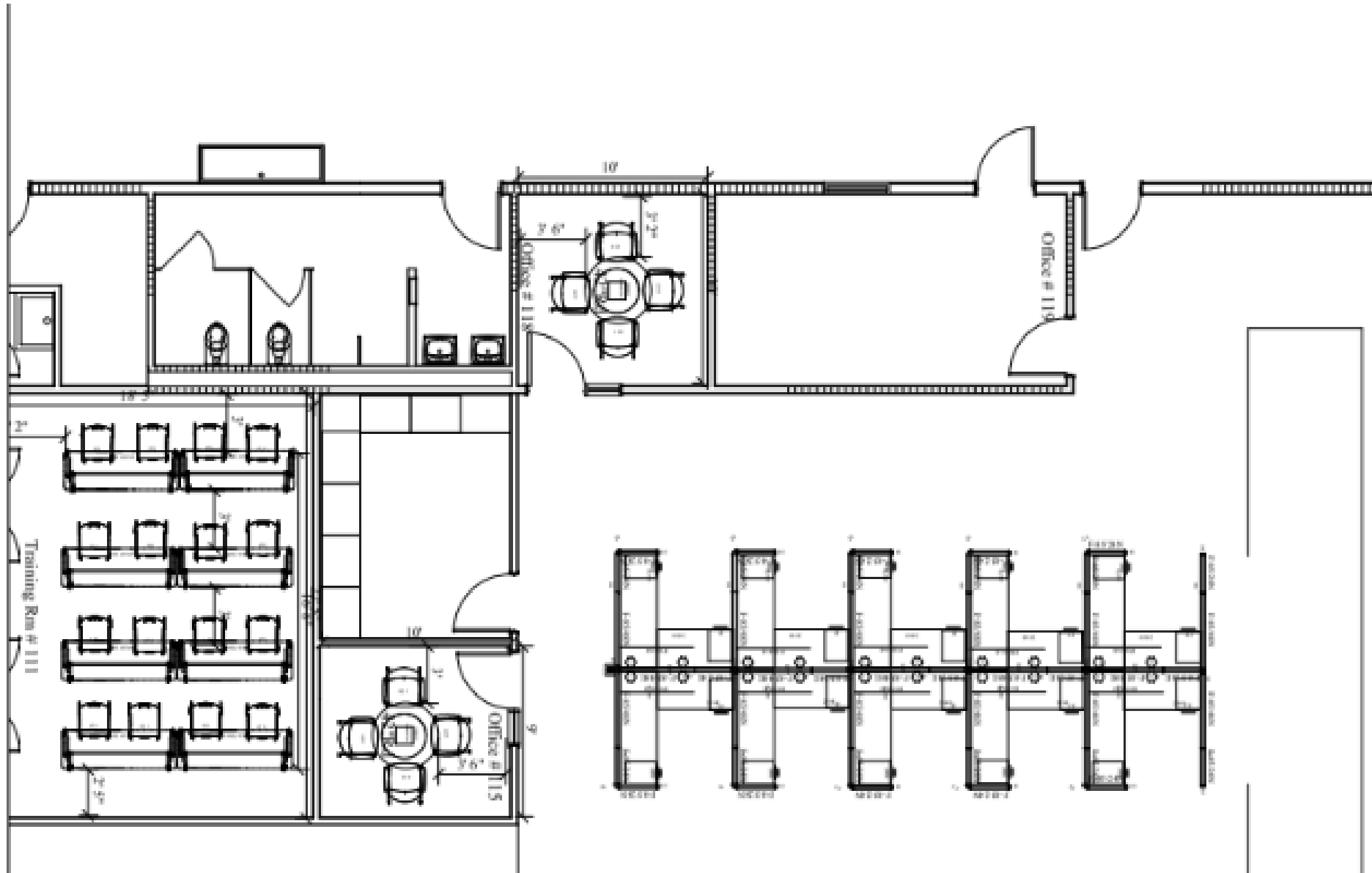
# MASTER FLOOR PLAN



ACE OFFICE FURNITURE  
HOUSTON







FRÍANT

## SYSTEM 2

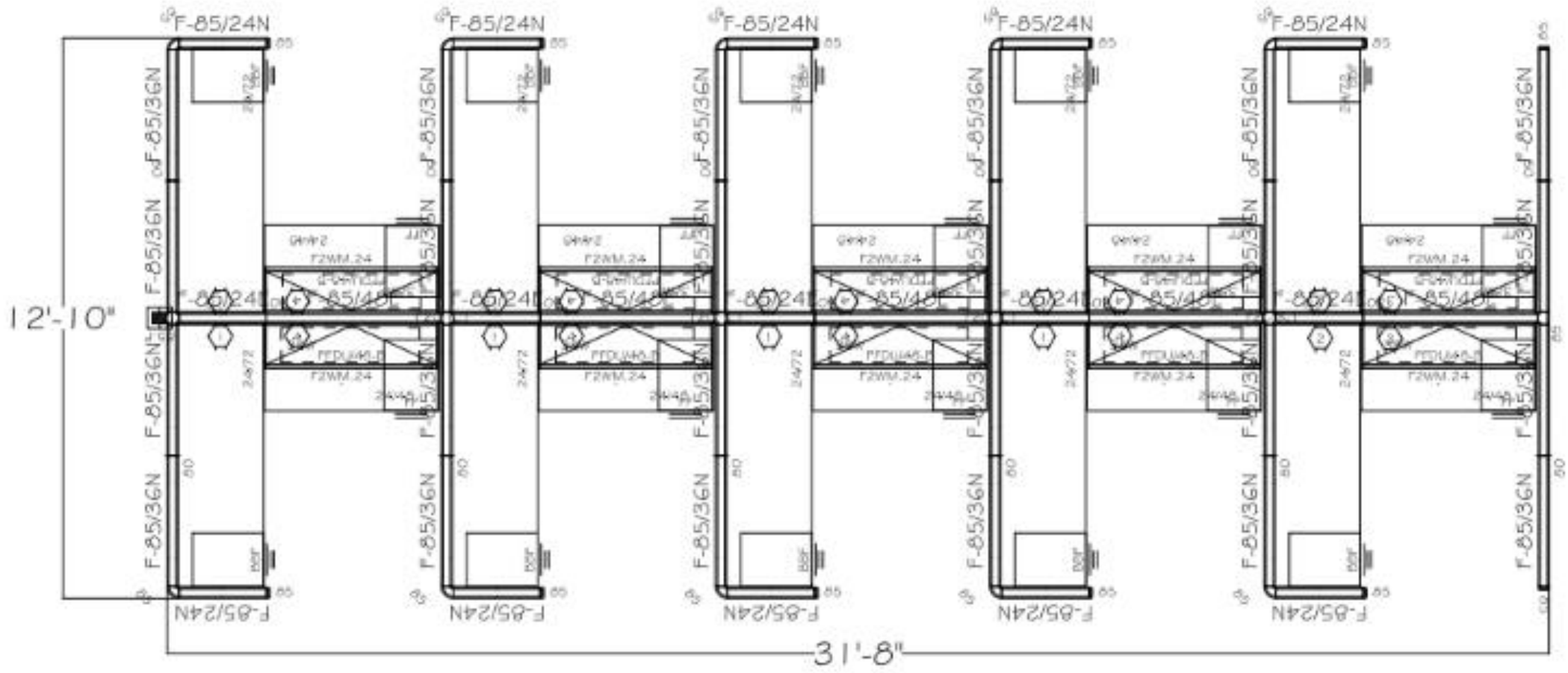
### Panel System

System 2 is a time-honored classic, combining functionality with affordability. This practical and flexible system has panels that reconfigure as needed to help your team grow or restructure a department easily. System 2 is an economical solution to all your office environment needs, also available on our 10-Day Quickship program in more than 20 fabrics and finishes.

[friant.com/systems-2](http://friant.com/systems-2)



ACE OFFICE FURNITURE  
HOUSTON



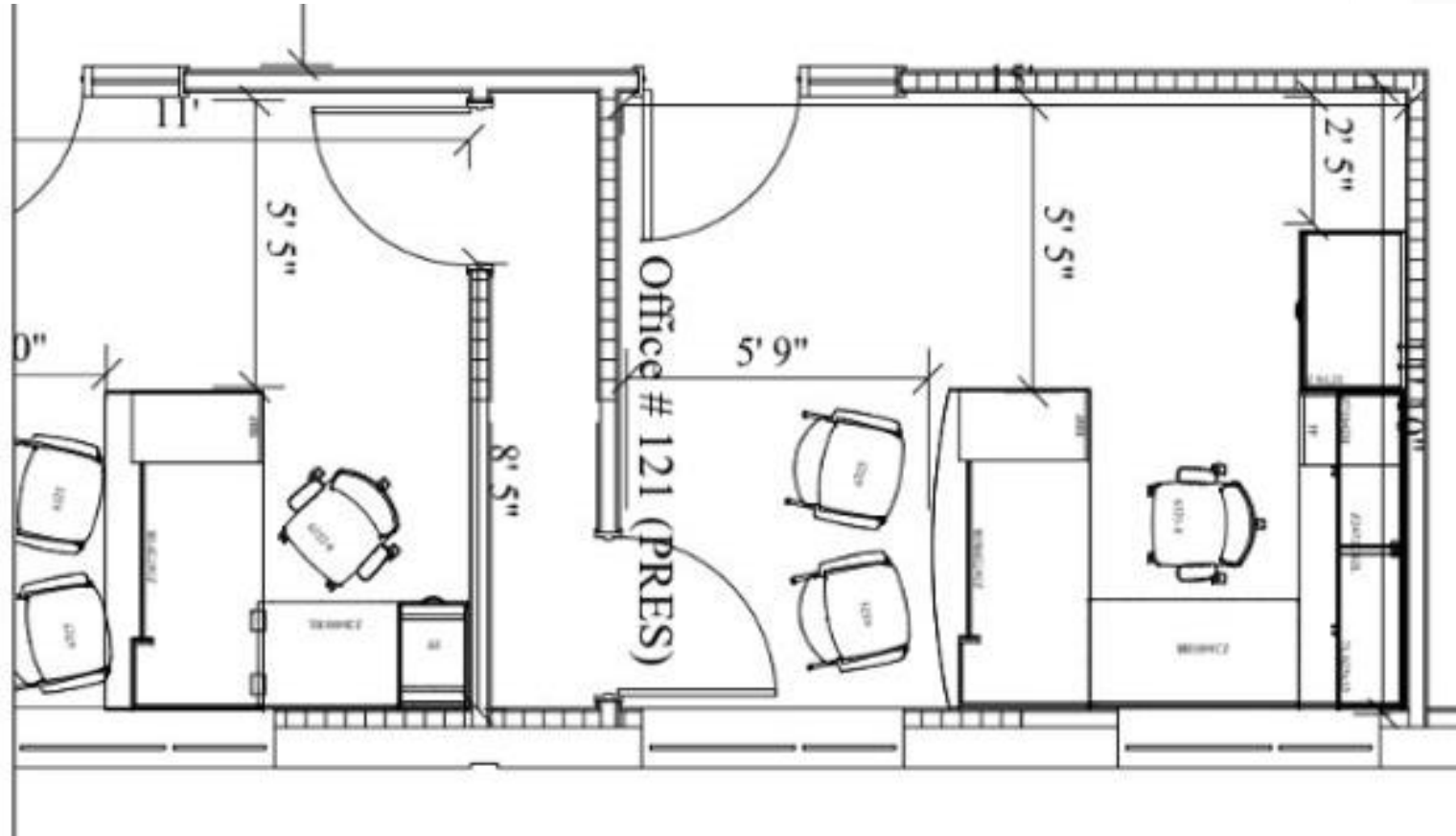


ZIRA

DESKING

**Zira** has a wide range of models and options that can provide both a traditional or contemporary appearance and layout. The open metal leg for worksurfaces and returns creates a modern look that integrates perfectly with a wide range of open and closed storage options. Zira has the right t for any working style.

Absolute Acajou (ACJ)







# Zira™

Tables provide a place to connect and collaborate with colleagues. Media, boardroom and collaborative tables fit the way you work. Power and technology options may be specified in table tops. Audiovisual components: multimedia cart, lectern, visual board. Complementary Buffet components: buffet cart, serving cart and buffet. Bases with doors are fully accessible from either side. Work surface grommets available in Black only. Dimensions: W144 x D48 x H30 IN.

Zira

## Features



Power block (closed)



Grommet



1.5" standard flat edge



Multiple power block configurations available (open)



Easy access to wire management



1.5" bicut edge



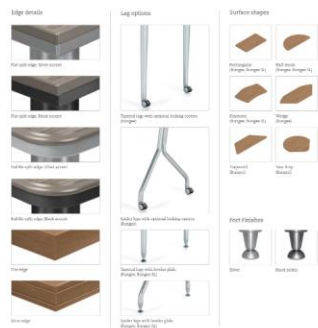
1.5" fluted edge



The Bungee family - versatile, efficient, economical

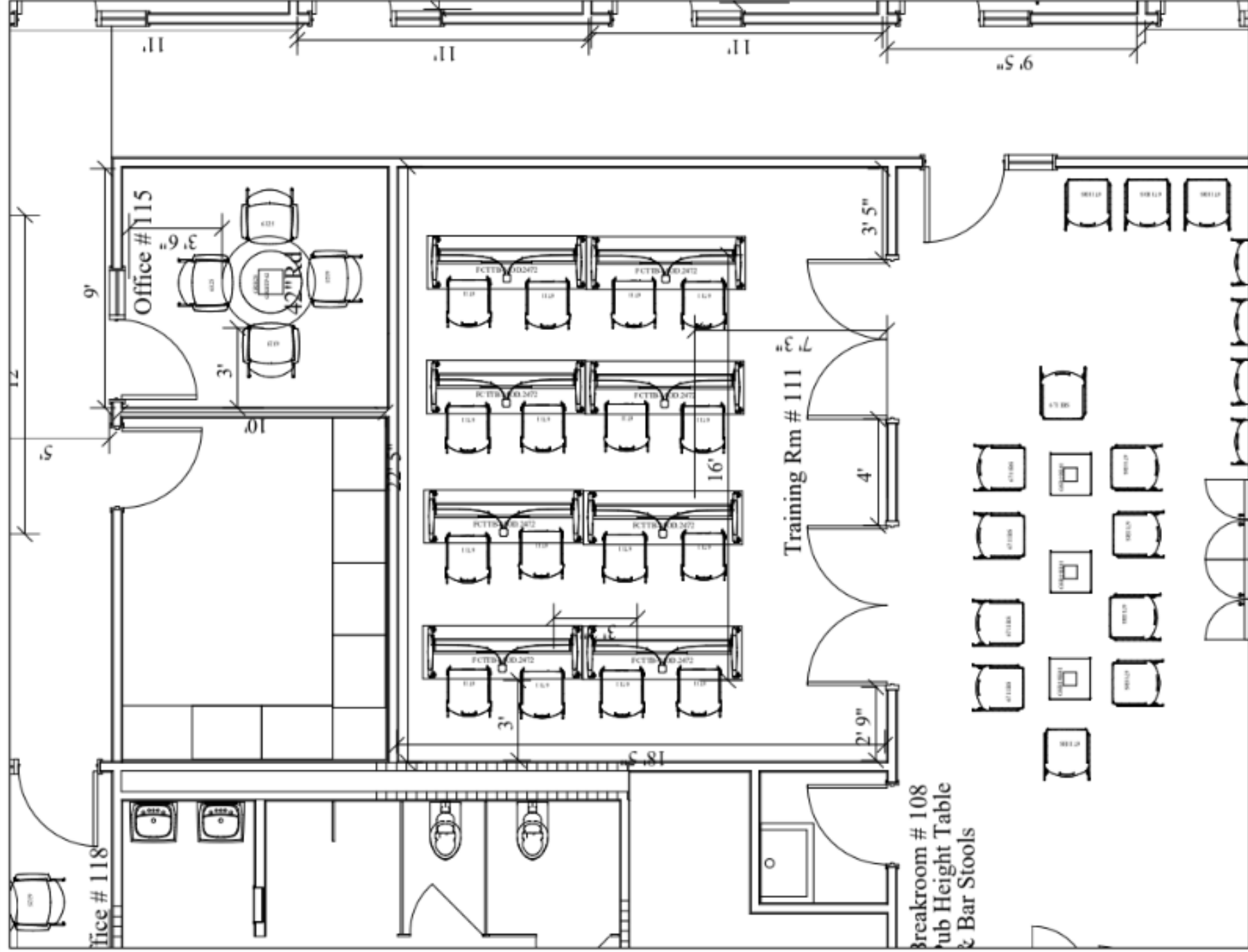


It's in the details



Simple and easy to use





Features and options



Handhold for ease of stacking



Back cut-out for easy cleaning



Upholstered seat models available



Color matched arm models available



Optional ganging brackets



Optional glides available  
(clear polycarbonate glide shown)



Medium density transportation dolly for upholstered or polypropylene chairs



High density transportation dolly for polypropylene chairs only

A lightweight performer



Transform any space into a great place



Color it your way



Available in a range of contemporary colors with matching arms. Optional glides and ganging brackets are available. Designed by Zoëy Chu.

Stack and store



Low back bar stool



Low back concrete stool with upholstered seat



Side chairs and stools stack four high on the floor



Side chairs without upholstered seat too high on a dolly



sas

global

A high performer



Meet anywhere



Gather naturally





Join the conversation



It's a simple thing done right



Features



Matching edge on all sides



Power management in select columns



Optional wire management grommets on select sizes



Factory installed metal inserts for easy metal-to-metal base connection



Leveling glides standard on all bases



1/2" thick steel square and round metal bases



Optional power and data modules on select sizes

Base finishes



Chrome



Brushed Chrome



Tungsten



Designer White



Black

Bases





# SYMPHONY



500, 502 and 503 Group with TL2424 and TL2440 Tables



502 and 503 Group with TL2424 and TL2440 Tables



500 Single Chair



500 Two-Seater Chair



500 Table and Power Station



500 Table and Power Station (Showing Side View)



Chrome Leg



500 Leg



Black Leg



500 Wood Arm and Center Cushion



Back Handle Option

# SYMPHONY

# SYMPHONY



500



500



500

Dimension	500	502	503
Seat Height	19	19	19
Seat Width	23	40	76
Seat Depth	21.5	27.5	21.5
Chair Height	34	34	34
Chair Width	31.5	57.5	79.5
Chair Depth	34	34	34
Arm Height (To Floor)	28	30	30

### Occasional Tables



TL2424 Side Table



TL2424 End Table



TL2440 Coffee Table



TL2424 End Table



TL2424 Accent Table



TL2440 Coffee Table

- Walnut
- Mahogany
- Clear Maple
- Spotted Maple
- Cognac
- CD Maple
- Natural Cherry
- OG Light Cherry
- CD Cherry
- Dark Cherry
- OFS Cherry
- Flamed Cherry
- Black Lacquer
- OG Espresso
- OG Oak
- OG Oak

### Dillon Vinyl Grade 1


Shown on Cover  
500 with table and power option



14021 Redwood Avenue • Spring, TX 77381 • 281.202.2800  
902.800.2800 • 800.551.2800 • Fax: 800.204.2800 • [www.oci.com](http://www.oci.com)

© 2014 OCI Contract Seating



**ACE OFFICE FURNITURE**  
HOUSTON

EVOLVE Series  
Executive/Conference/Guest



SITWELLNEXT



FEATURES:

- In-stock 48 hour Quick Ship
- Chrome frame with black, white or grey synthetic leather cover
- Ships KD with assembly required

SPECIFICATIONS:

Model	Seat	Seat Height	Back	Overall Height
EV-25	19" W x 17.5" D	18.5"	18.5" W x 19" H	36"
EV-35	19" W x 17.5" D	18" - 21.5"	18.5" W x 19" H	36" - 39"
EV-45	19" W x 17.5" D	18" - 21.5"	18.5" W x 26" H	43" - 46"



AVAILABLE IN:



Cover Models: E-45-grey (left)  
E-35-White (top center)  
E-35-Black (top right)  
E-25-white (bottom right)



Chrome arms with removable arm covers



Pneumatic knee-tilt mechanism with lock in upright position only



Chrome 5-leg base standard

SITWELLNEXT

14815 Radburn Avenue  
Santa Fe Springs  
California 90670  
Web: sitwell.com

Toll Free: 866.624.4968  
Local: 562.802.0464  
Fax: 866.624.9662  
Email: customerservice@sitwell.com



ACE OFFICE FURNITURE  
HOUSTON





VION

Make it fit



Work chair with upholstered back

Work chair with mesh back

Mesh colors



Mechanisms



Seat Options



Petite seat option

Arm options



Base options



Optional Flag

Guest chair frame finishes





**DeMontrond**  
CONROE + HOUSTON + TEXAS CITY

**Centurion Pipeline L.P.**



**enQuest**



**HPO Global**  HPO Global Resources Ventures Inc

**ALFRED TALKE**  
Logistic Services

**DLTRADING**



*Davita*  
bringing quality to life™

**LOTUS**  
MIDSTREAM



**Volkswagen**



**KIDDIE**   
**ACADEMY**  
EDUCATIONAL CHILD CARE

**HOME 2**  
SUITES BY HILTON

**SYNERGEN X**



 Ervin Cable Construction, LLC

**flnb** First Liberty National Bank



**GMC**



**L I N C O L N**



**ELEVATED AV PRODUCTION**

**GENESIS**



## ACE OFFICE FURNITURE

HOUSTON



## ACE OFFICE FURNITURE HOUSTON'S MISSION STATEMENT

OUR MISSION STATEMENT IS TO DEVELOP AND SUSTAIN LONG LASTING BUSINESS RELATIONSHIPS WITH EACH CUSTOMER IN ORDER TO COLLABORATIVELY MEET ALL OF YOUR OFFICE FURNITURE NEEDS, WHILE KEEPING CUSTOMER SERVICE AS OUR NUMBER ONE PRIORITY.

### – WHO WE ARE –

Ace Office Furniture Houston ( AOF) is a leading provider of high-end, executive quality office furniture solutions for businesses in Houston and surrounding Texas cities that are beginning, expanding, upgrading, and/or moving. We offer what might be needed to outfit an office space, including new and remanufactured office cubicles. Our workspace design consultants work closely with clients, advising and guiding them through the process of conceptualizing, designing, selecting, delivering and installing their furnishings. If your business is in Houston or the Texas Gulf Coast area, Ace Office Furniture Houston is the place to visit for flexible and affordable solutions for your office furniture and space planning needs.